



Educational Master Plan Update

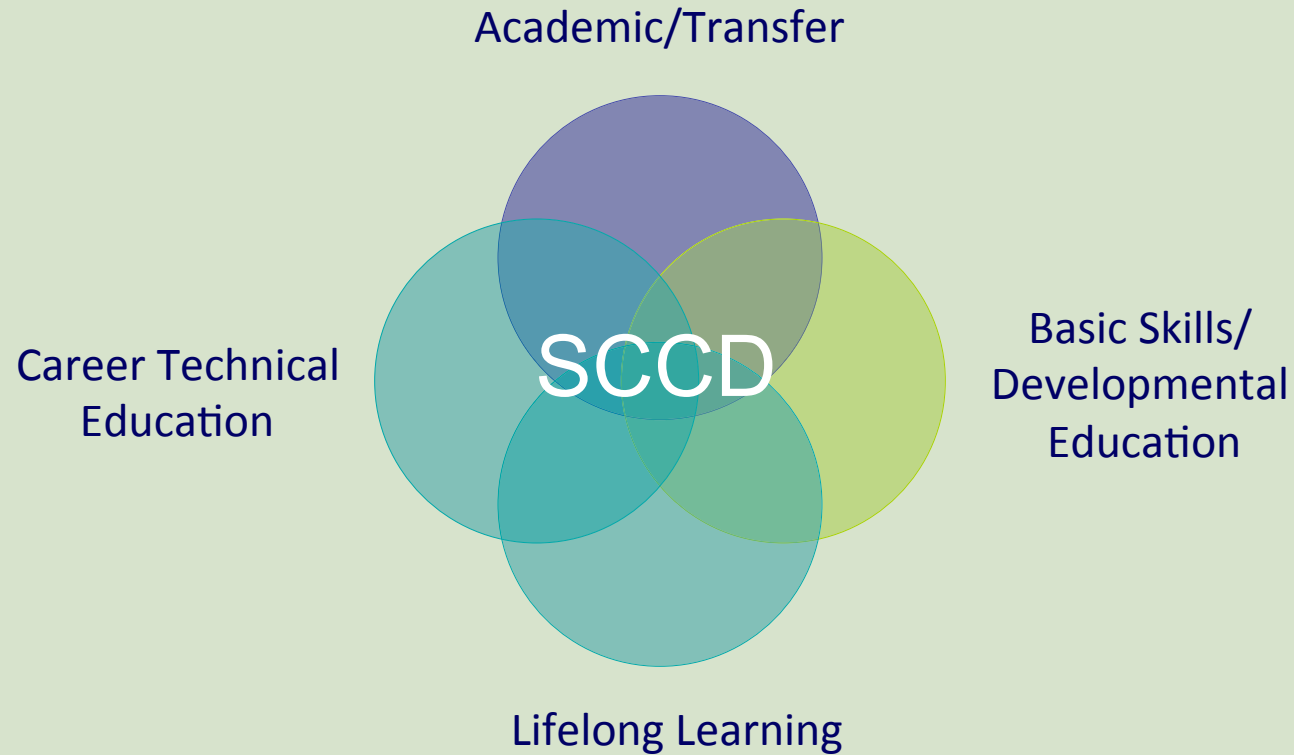
Board Work Session | November 2, 2011

SOLANO
COMMUNITY COLLEGE DISTRICT

Agenda

- I. Introduction and Meeting Objectives
- II. Environmental Scan and Community Input
Findings and Implications
- III. Board Discussion:
 - Strengths, Weakness, Opportunities and Threats
 - Goals and Priorities
- IV. Next Steps

Our Multiple Missions . . .



EMP Process Overview

Purpose

- Guide development of College programs
- Identify College, community and economic trends and needs
- Develop program recommendations and strategies for program improvements
- Inform facilities and resource planning efforts

EMP Development



Overview of Planning Process

- ✓ Environmental Scan— *Summer 2011*
- ✓ Community Forums—*Fall 2011*
- ✓ Faculty, Staff and Student Forums—*Fall 2011*
- **Interdisciplinary Faculty Meetings
October 2011 – January 2011**
- Draft Educational Plan Spring 2012



Facility Master Plan Process



Capital Bond for improvements to facilities

Interdisciplinary Faculty/Staff Meetings

- Meeting 1: Review Environmental Scan Findings, Program Assessment Process and Tools
October 31st
- Meeting 2: Develop Program Directions
November 28th
- Meeting 3: Translate Direction into Actions
January 23rd



Environmental Scan

Environmental Scan

- Demographics: Service Area and Student
- Potential Future Students
- Enrollment Trends
- Regional Education Options
- Industry and Employment Trends

Environmental Scan

1. SERVICE AREA AND DISTRICT DEMOGRAPHICS

The Solano Community College District (SCCD) service area includes Solano, Dixon, Fairfield, Sutter City, Vacaville and Valley in Solano County and Martinez in neighboring Yuba County. The service area accounts for approximately 95 percent of the total population in Solano County. The service area is surrounded by Yuba County to the northwest, Yuba County to the northeast, Contra Costa County to the south and Sacramento County to the east. The county has a number of transportation corridors, including highways 112, 80, 113, 305, 980 and 790 and the Capital Corridor rail line, all of which provide travel and access within and around Solano County.

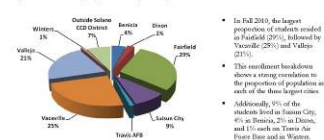
Figure 1-1: Solano Community College District Area Map



This chapter describes demographic characteristics of the SCCD service area as well as the student population of SCCD. The purpose of the discussion is to inform SCCD's understanding of how closely the District's students match the make-up of the community at large, and how it can identify opportunities to enhance the reach and relevance of SCCD programs.

Environmental Scan

Figure 1-2: Enrollment by City of Residence (Fall 2010)



- In Fall 2010, the largest proportion of students resided in Fairfield (29%), followed by Vacaville (25%) and Travis AFB (9%).
- This enrollment breakdown shows a strong correlation to the proportion of population in each of the three largest cities.
- Additionally, 9% of the students lived in Sutter City, 8% in Dixon, 2% in Dixon, and 1% each on Travis Air Force Base and in Western.
- Dixon and Dixon are slightly under-represented based on their current population.
- Another 7% of the students resided outside the Solano Community College District.
- The mix of current enrollment has remained essentially the same since 2005.
- While SCCD's new Valley and Vacaville centers do not seem to have impacted the mix of SCCD's, the new locations likely provide more convenient access for some and additional sections of classes for others.

Age

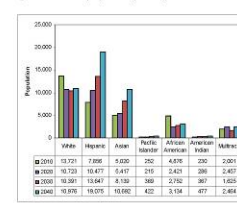
The age breakdown of the community is relevant to the types of programs and to the methods of delivery. Students coming to the District following high school have different needs than older residents returning for evening or continuing education.

Age	2005	%	2008	%	% Change 2005-2008
0 to 14	89,023	20%	145,488	20%	63.7%
15 to 24	87,074	19%	86,818	14%	-41.1%
25 to 34	58,873	13%	82,373	12%	40.2%
35 to 44	57,888	13%	89,248	13%	53.9%
45 to 54	48,257	11%	88,266	13%	32.1%
55 to 64	53,170	12%	87,217	10%	26.4%
65 to 74	28,882	6%	54,479	8%	189.9%
75 and over	21,244	5%	71,488	10%	239.9%
Total	441,581	100%	697,228	100%	58.1%

California Department of Finance, July 2011

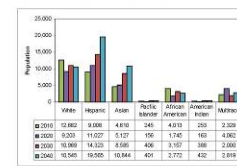
Environmental Scan

Figure 1-6: Solano County Population Projections Age 15-19



California Department of Finance, July 2011

Figure 1-7: Solano County Population Projections Age 20-24



California Department of Finance, July 2011

- Looking down the population by age group, the same trends can be seen in both the 15-19 and 20-24 age groups.

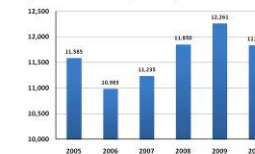
Environmental Scan

3. SOLANO COMMUNITY COLLEGE DISTRICT ENROLLMENT TRENDS

An improved understanding of current and historical District trends will help guide the planning process and assess how effective the District has been in achieving its mission. The following enrollment data has been collected for enrollment, course success and retention, methods of instruction, degree and certificate completion and transfer to public four-year institutions.

Student Enrollment

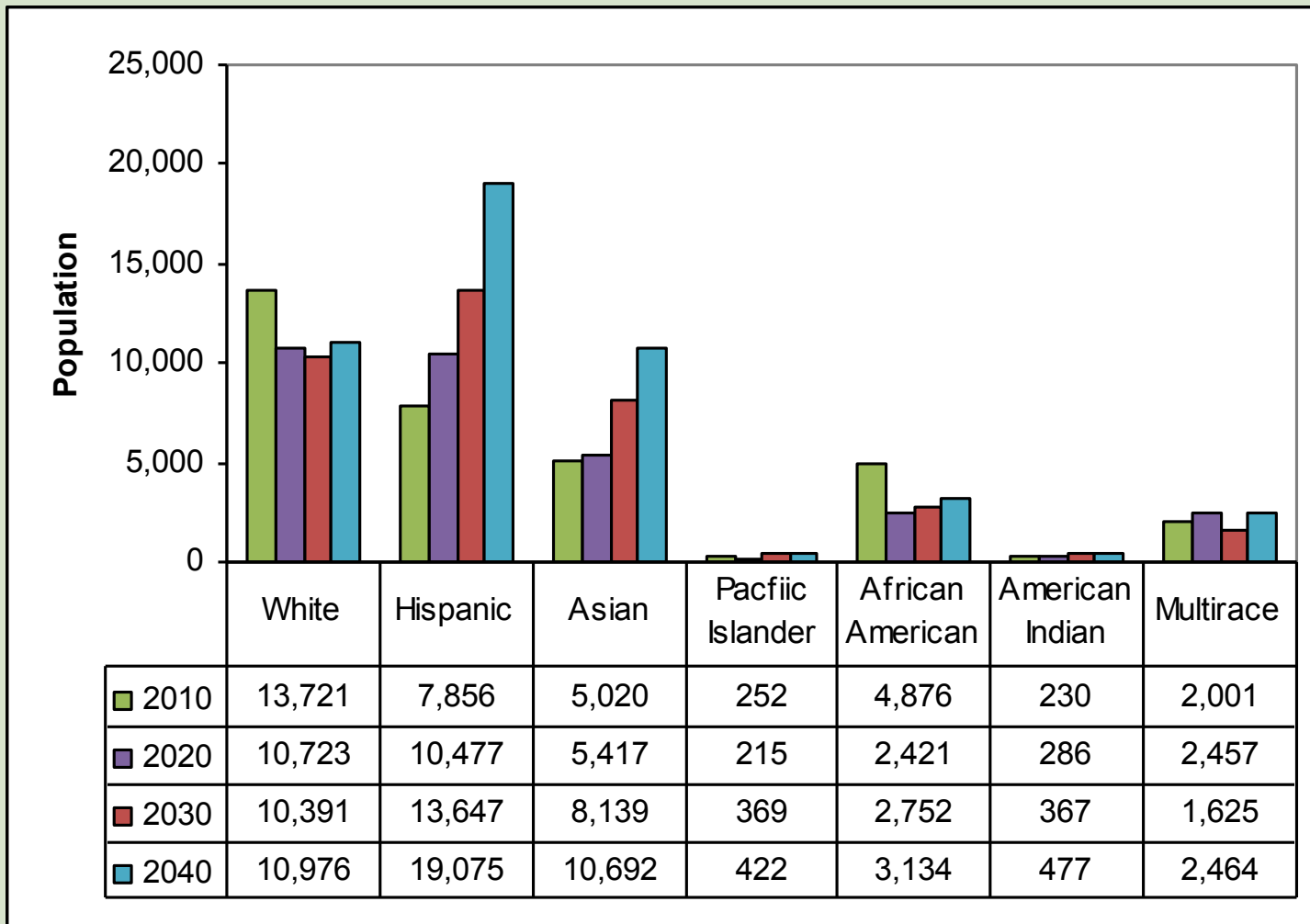
Figure 3-1: SCCD Student Head Count (Fall 2005-2010)



California Department of Finance, July 2011

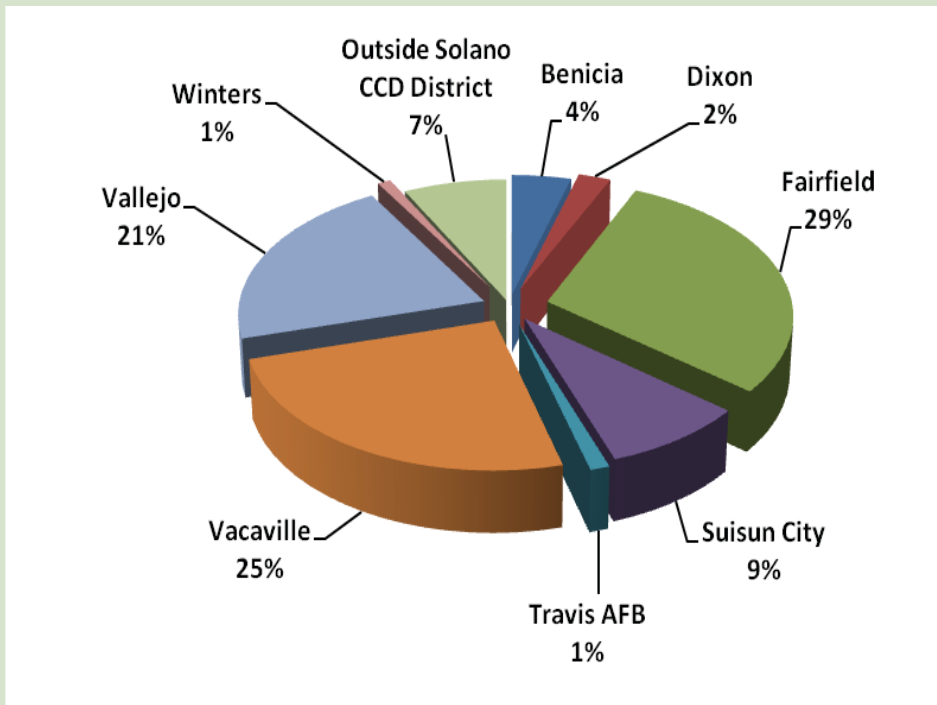
- In the most recent fall semester, student enrollment increased by 16.6 percent from a low of 10,983 in 2006 to a high of 12,791 in 2009.
- Study growth from a low point in 2006 brought SCCD student enrollment number to a high of 12,791 in 2009.
- For the most recent fall semester (2010), student enrollment was 11,836.
- These enrollment figures should be considered in the context of the new Valley Center, opened in September 2007, and the Vacaville Center, opened in 2010.

Increasingly Diverse Solano County Population



Location is Critical

Fall 2010 SCCD Enrollment by City



Source: California Community Colleges Data Mart

Projected Population Growth by City

City	10-35	10-35
	% change	# change
Benicia	11.50%	3,103
Dixon	30.24%	5,549
Fairfield	20.58%	21,679
Suisun City	22.02%	6,189
Vacaville	20.20%	18,672
Vallejo	19.80%	22,958
Winters	86.59%	5,736
Total	21.30%	83,886

Source: California Department of Finance

Aging Population

Age	2010	%	2040	%	% Change 2010-2040
0 to 14	89,023	20%	140,489	20%	57.8%
15 to 24	67,074	15%	94,618	14%	41.1%
25 to 34	58,879	13%	91,375	13%	55.2%
35 to 44	57,980	13%	89,248	13%	53.9%
45 to 54	66,737	15%	88,285	13%	32.3%
55 to 64	53,170	12%	67,217	10%	26.4%
65 to 74	26,982	6%	54,478	8%	101.9%
75 and over	21,216	5%	71,496	10%	237.0%
Total	441,061	100%	697,206	100%	58.1%

California Department of Finance Projections July 2007

Students Arriving With Challenges

High School	Graduation Rate		English Learners		% Free Lunch	
	2005	2010	2005	2010	2005	2010
Armijo High	90.4%	79.1%	9.1%	12.0%	29.7%	32.9%
Fairfield High	89.3%	83.0%	6.2%	9.6%	26.0%	36.6%
Vanden High	100.0%	98.4%	2.2%	1.0%	6.8%	18.8%
Will C. Wood High	94.9%	84.4%	3.9%	5.8%	16.0%	31.2%
Vacaville High	94.5%	85.3%	8.2%	7.6%	19.8%	24.1%
Jesse M. Bethel High	81.0%	66.0%	7.0%	6.9%	22.8%	40.2%
Hogan High	76.7%	61.6%	11.0%	11.5%	27.3%	49.3%
Vallejo High	80.1%	57.8%	13.1%	11.5%	32.6%	55.1%
Benicia	98.7%	89.4%	.4%	1.0%	5.5%	10.2%
Dixon High	91.6%	87.1%	9.2%	11.1%	27.6%	36.1%
Winters High	na	89.6%	na	15.7%	na	44.8%
Angelo Rodriguez	90.4%	90.7%	3.7%	4.7%	15.9%	17.5%
Solano County Totals		74.0		14.9		38.6%
State Totals		78.6		23.7		55.9%

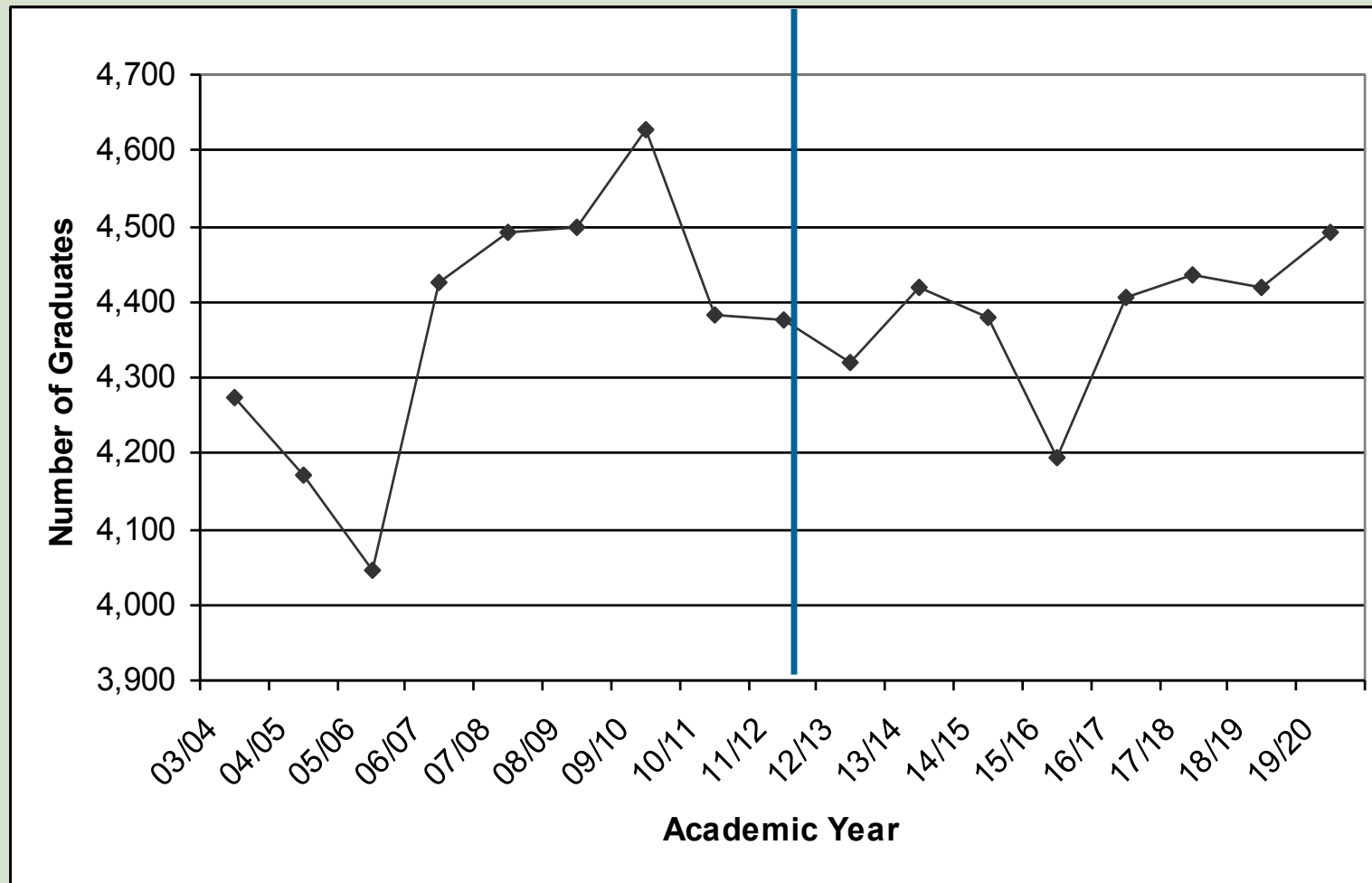
Source: California Department of Education

Basic Skills Needs

High School	Language Arts	Math	Science	History Social Science
Armijo High	71%	42%	66%	67%
Fairfield High	68%	42%	61%	56%
Vanden High	81%	66%	87%	79%
Will C. Wood High	72%	61%	72%	54%
Vacaville High	74%	41%	72%	70%
Jesse M. Bethel	75%	60%	70%	64%
Hogan High	69%	43%	74%	60%
Vallejo High	64%	30%	62%	47%
Benicia High	89%	79%	86%	83%
Dixon High	80%	51%	71%	65%
Winters High	76%	45%	83%	79%
Angelo Rodriguez	79%	44%	77%	73%
Solano County	79%	70%	73%	68%
State Total	79%	72%	74%	70%

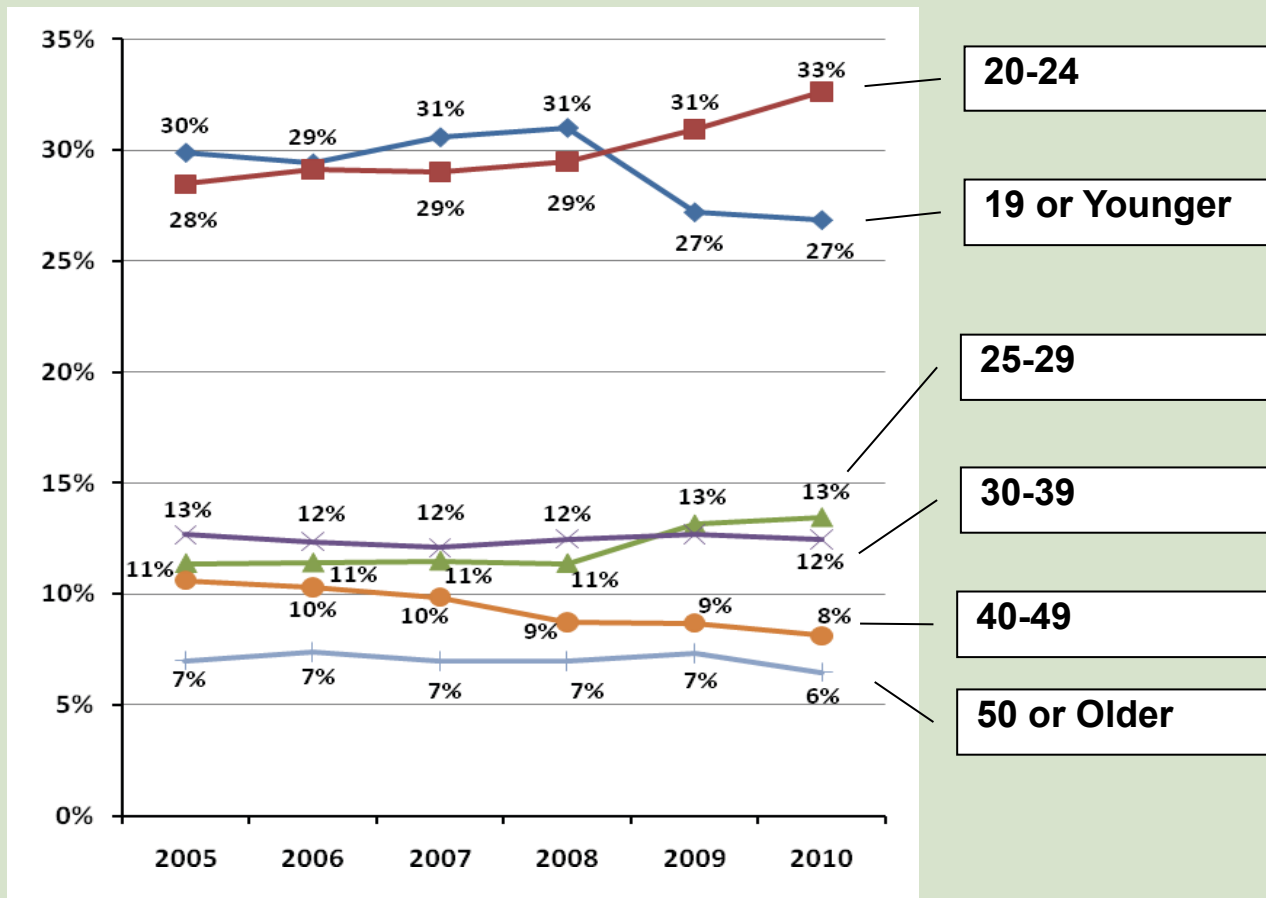
Source: California Department of Education

Dropping Number of High School Graduates



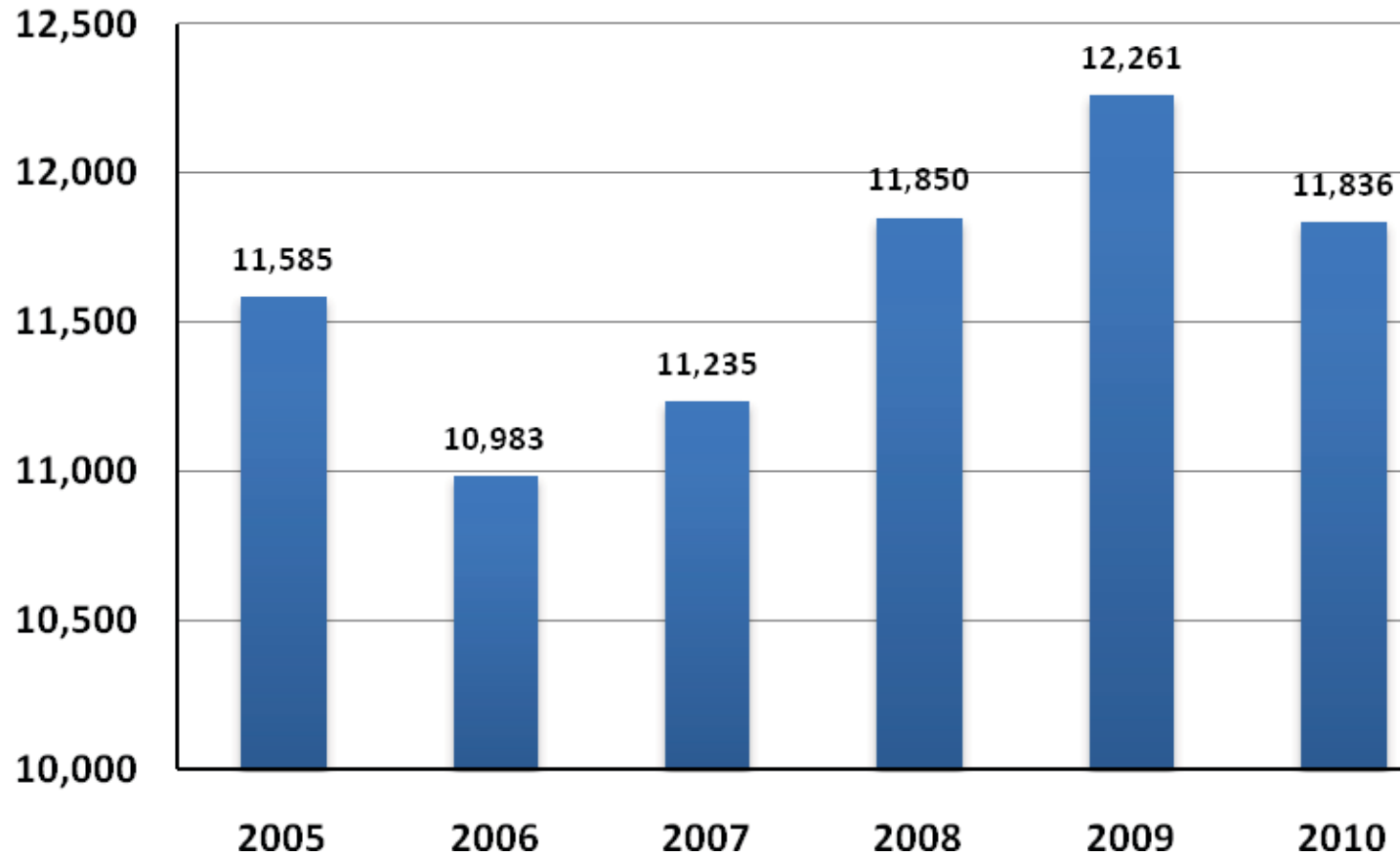
Source: California Department of Finance

High School Direct Enrollment Decline



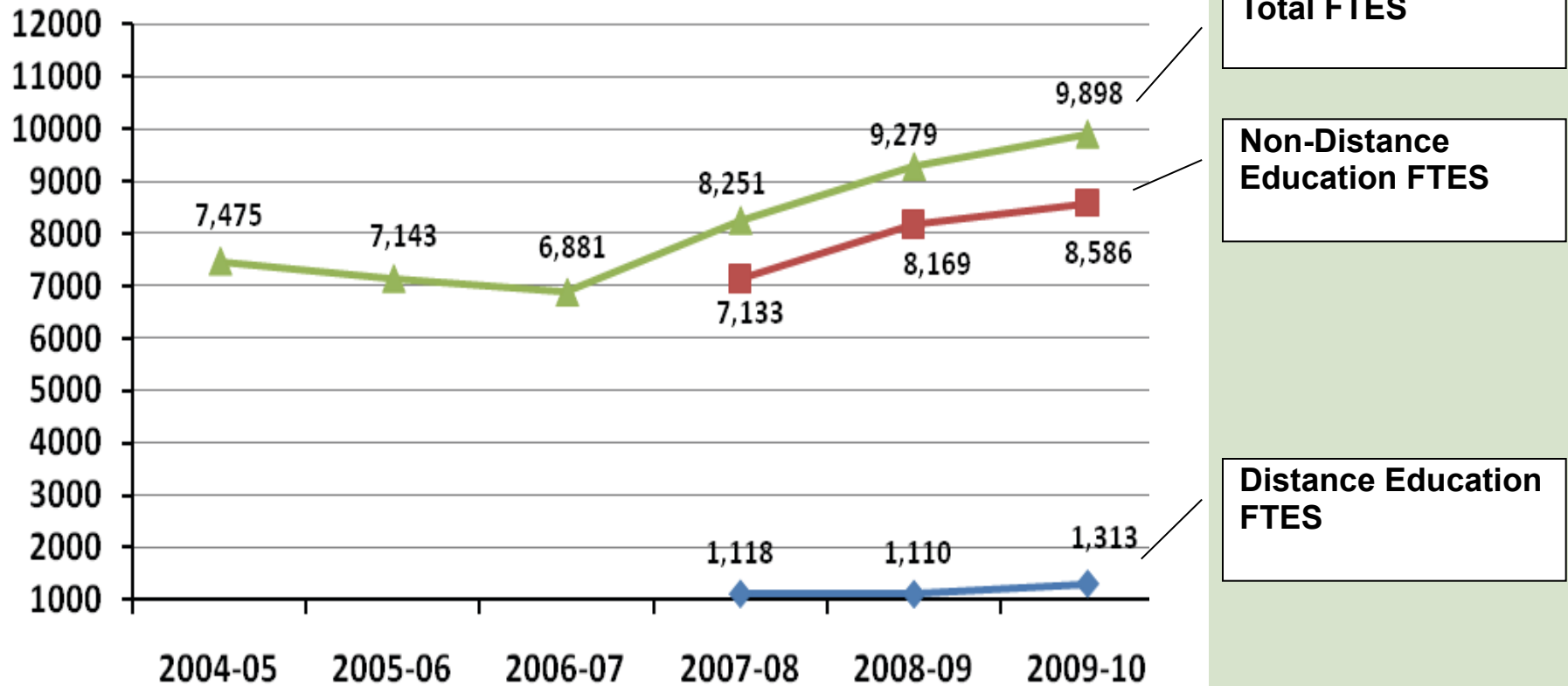
Source: California Community Colleges Data Mart

Total Student Headcount



Source: California Community Colleges Data Mart

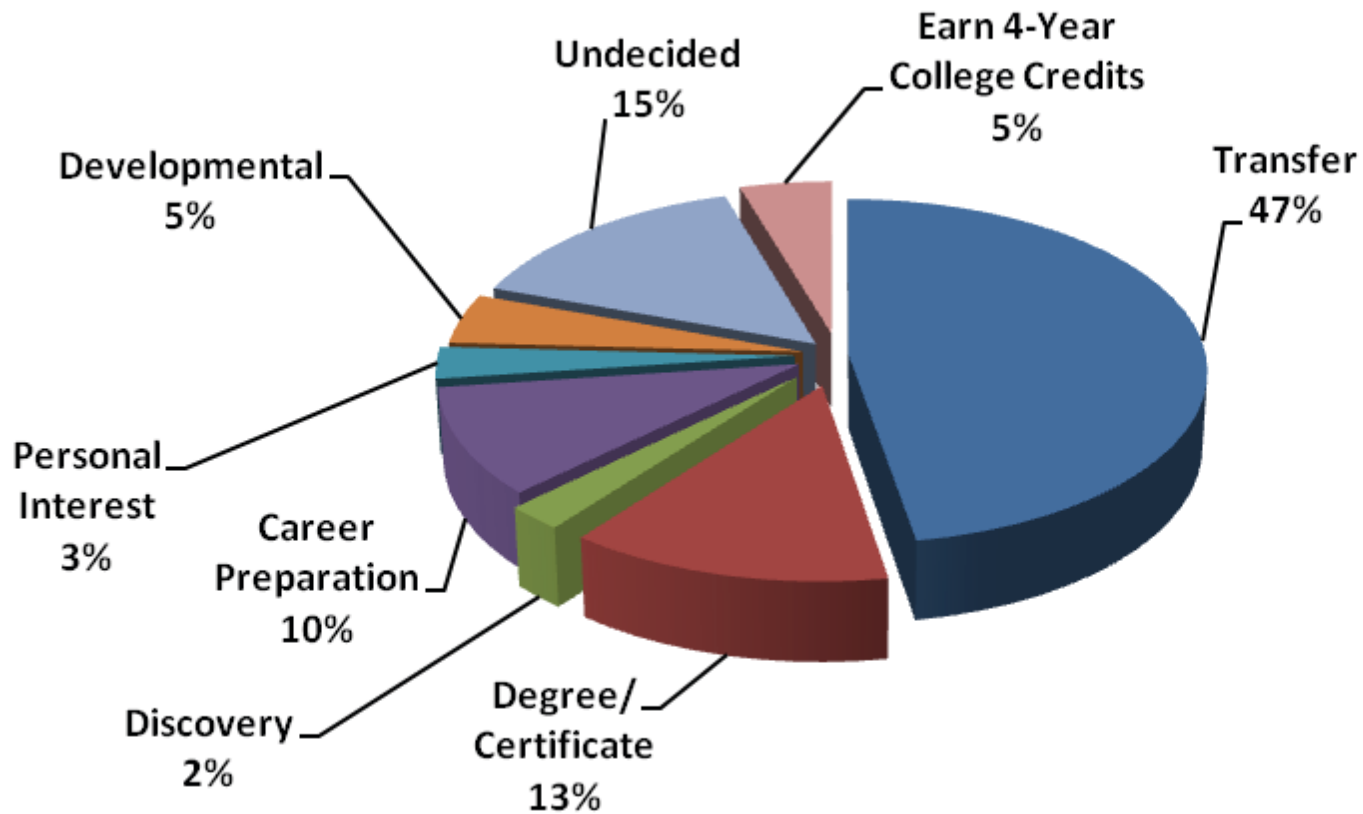
FTES Continues to Climb



¹ Accurate data for Distance Education were not available before 2007-08

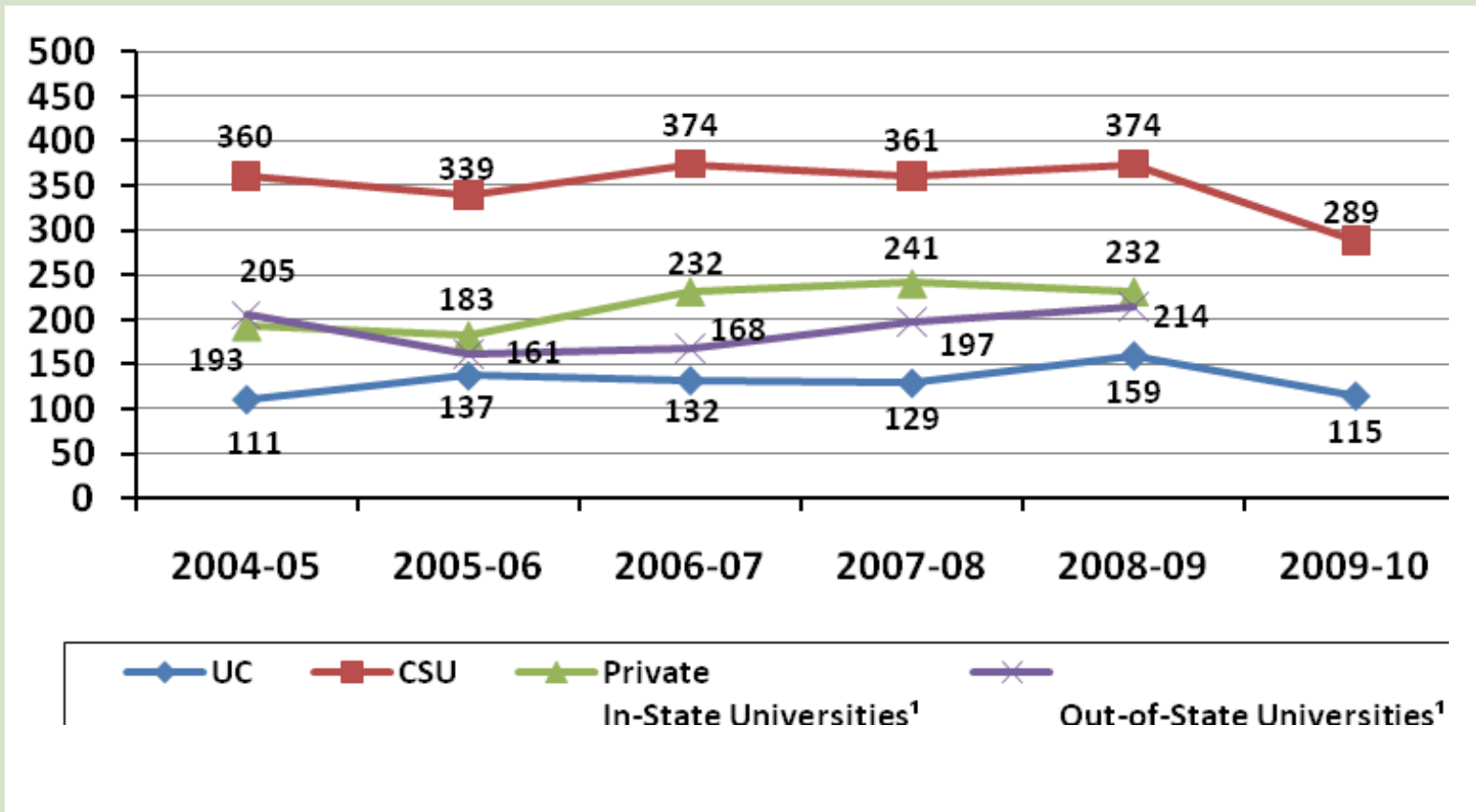
Source: California Community Colleges Data Mart

SCCD Student Goals



Source: California Community Colleges MIS data, 2010

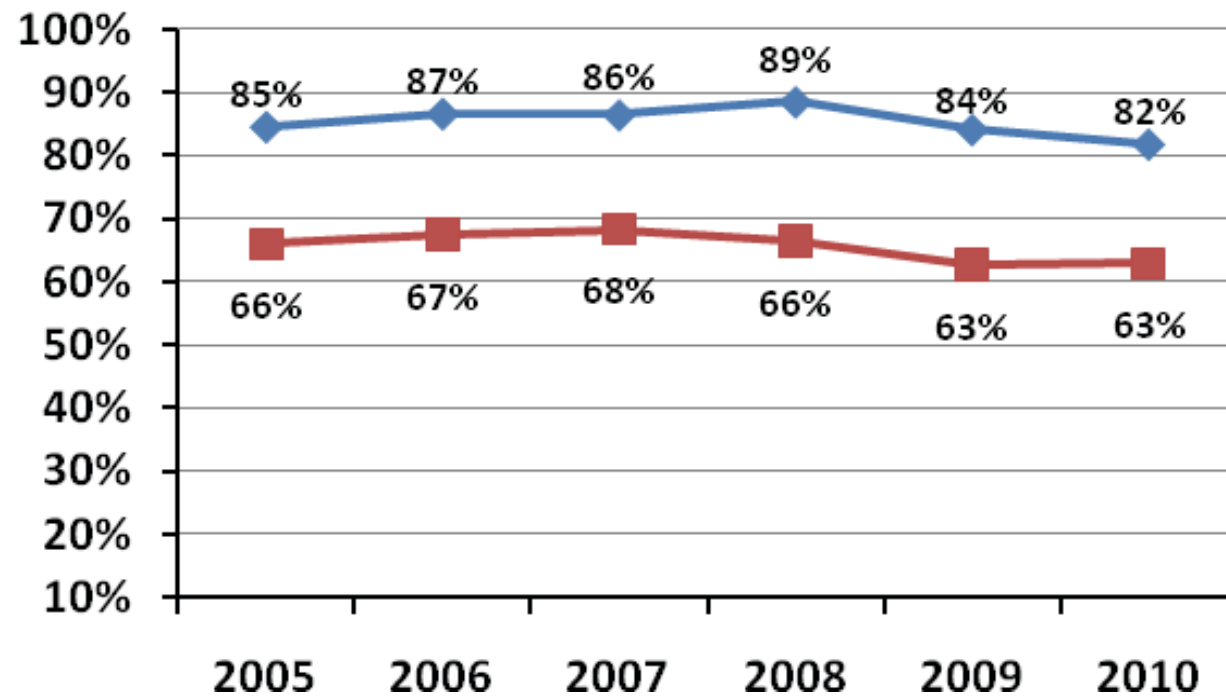
Dip In Transfers



¹ 2009-10 data not available

Source: California Postsecondary Education Commission/California Community Colleges Chancellor's Office

Retention and Success Rates Down



Retention Rate¹

Success Rate²

¹ Percentage of students who do not withdraw from a course.

² Percentage of students who complete a course with an A, B, C or credit grade.

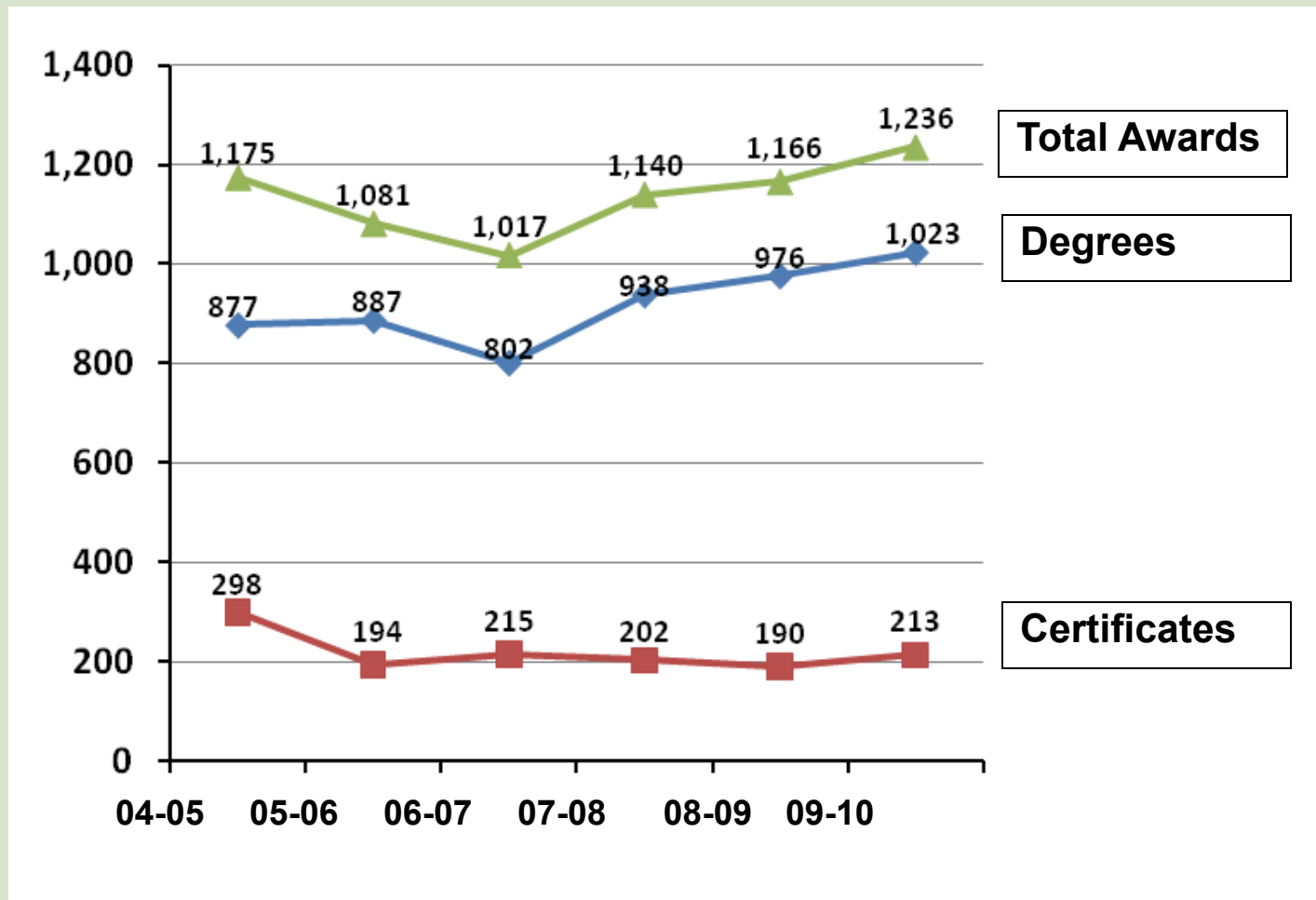
Source: California Community Colleges Data Mart

Community College	American River	Contra Costa	Cosumnes River	Diablo Valley	Napa Valley	Sacramento City	Solano
Total Enrollment (Headcount)	32,864	8,423	14,560	20,769	7,558	24,633	11,836
Credit FTES	10,688.89	3,102.70	4,971.71	7,686.22	2,248.02	7,800.46	4,344.23
Non-Credit FTES	0.00	41.71	0.81	4.00	228.20	81.08	5.80
Success Rate	69.38%	68.99%	63.27%	70.43%	85.23%	63.45%	62.93%
Retention Rate	83.09%	83.54%	80.19%	82.25%	99.94%	78.88%	81.83%
Distance Education FTES	1,161.50	124.42	555.85	667.62	142.59	692.75	532.64
% of total FTES	10.9%	4.0%	11.2%	8.7%	5.5%	8.8%	12.2%
Transfer Cohort 2004-05							
Transferred to a four-year institution within two years	5%	4%	5%	6%	6%	12%	5%
Transferred to a four-year institution within four years	25%	21%	25%	36%	25%	33%	24%
Transferred to a four-year institution within six years	37%	35%	35%	53%	38%	46%	37%
Basic Skills Breakdowns							
Basic Skills Credit FTES	734.50	262.99	423.83	235.75	93.70	529.15	410.98
Basic Skills FTES as % of total FTES	7%	8%	9%	3%	4%	7%	9%
Basic Skills Non-Credit FTES	-	13.59	0.81	-	308.60	81.08	4.55
Success Rate - Basic Skills	71.10%	62.12%	67.62%	58.35%	78.79%	60.52%	60.30%
Success Rate - Non-Basic Skills	69.24%	69.59%	62.83%	70.74%	85.64%	63.73%	63.23%
Retention Rate - Basic Skills	84.24%	82.01%	87.57%	78.36%	99.90%	80.17%	84.17%
Retention Rate - Non-Basic Skills	82.99%	83.67%	79.44%	82.35%	99.97%	78.75%	81.56%

Retention and Success by Ethnicity (Fall 2010)

Ethnicity	Retention Rate	Success Rate
African-American	77%	50%
American Indian/Alaskan Native	82%	63%
Asian	84%	69%
Filipino	81%	63%
Latino	83%	63%
Multi-Ethnicity	81%	57%
Pacific Islander	86%	64%
Not Specified	84%	67%
White	82%	68%
Total	82%	63%

More Degrees Awarded



Source: Integrated Postsecondary Education Data System (IPEDS)

Comparison of Degrees Offered

- American River
- Contra Costa
- Consumnes River
- Diablo Valley
- Napa Valley
- Sacramento City

Solano Community College Degrees and Certificates	Number of SCCD Degrees or Certificates				Degree or Certificate Offered						
	AA	AS	CA	JDC	Napa Valley College	Diablo Valley College	Contra Costa Community College	Woodland Community College	American River College	Cosumnes River College	Sacramento City College
Accounting		1	1	1	☒		☒		☒	☒	☒
Aeronautics		4	4								☒
Art and Graphic Design	5				☒	☒	☒	☒	☒		☒
Automotive Technology		2	2				☒		☒	☒	
Banking and Finance, Bank Operation		1	1								
Biology		1					☒	☒		☒	☒
Biotechnology		1	2				☒		☒		
Business/Management		5	5	1	☒	☒	☒	☒	☒	☒	☒
Chemistry		1					☒	☒		☒	
Communication Studies	1					☒	☒	☒		☒	☒
Computer and Information Science		3	3	7	☒	☒	☒		☒	☒	☒

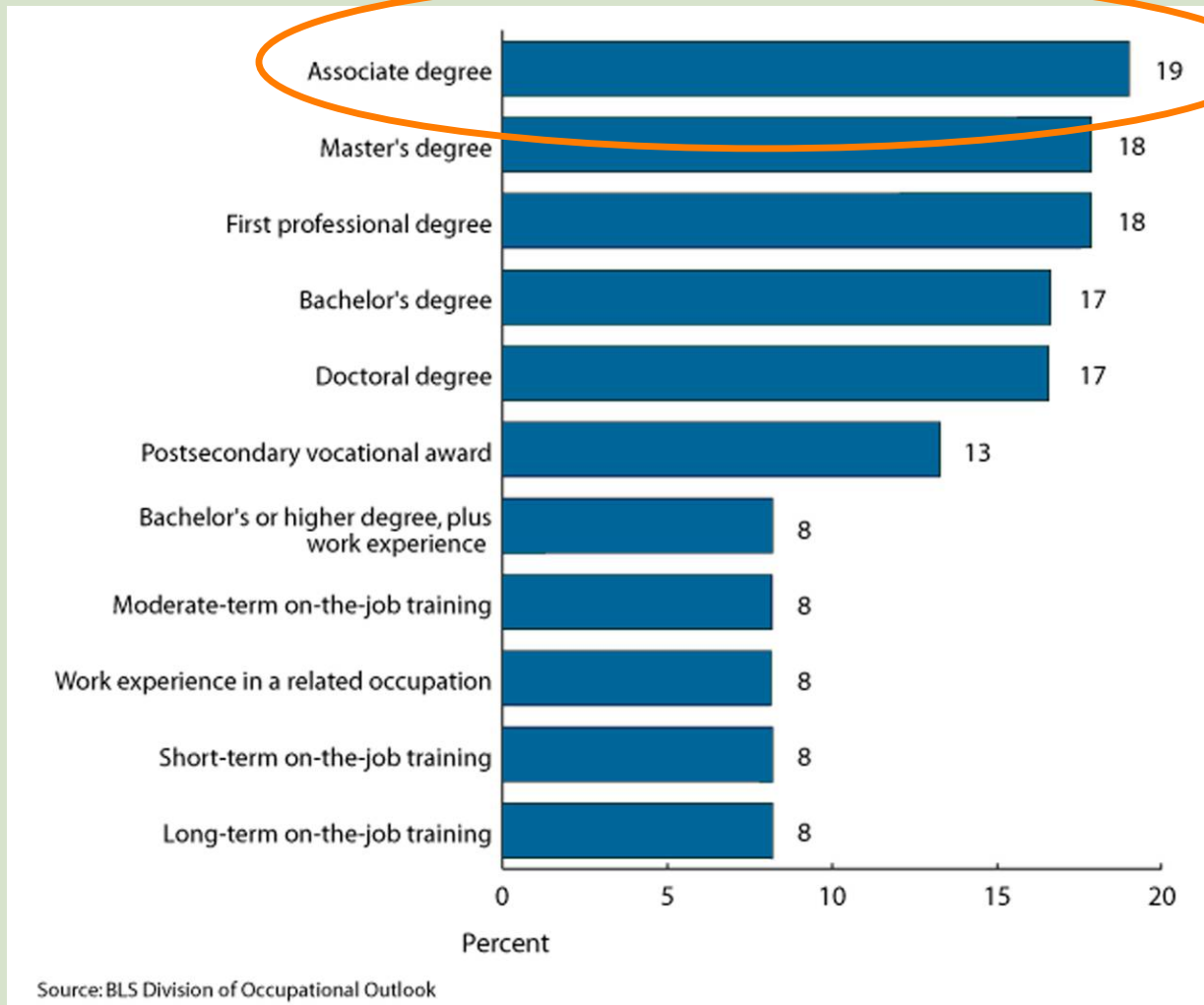
Unique Degrees/Certificates

- Solano Community College offers:
91 Degree Programs
70 Certificates
- Banking/Bank Operations
- Aeronautics
- Industrial Education/Management
- Interior Design
- Waste Water Technology

Hot Occupations

Fastest Growing	Largest Growth
Biomedical Engineers	Registered Nurses
Network Systems and Data Communication Analysts	Home Health Aides
Home health aide	Customer service representatives
Personal and home care aides	Food preparation and serving
Financial examiners	Personal and home care aides
Medical scientists	Retail salespersons
Physical assistants	Office clerks
Skin care specialists	Accountants and auditors
Biochemists and biophysicist	Nursing aides, orderlies and attendants
Athletic trainers	Postsecondary teachers

Hot Jobs: Education Required

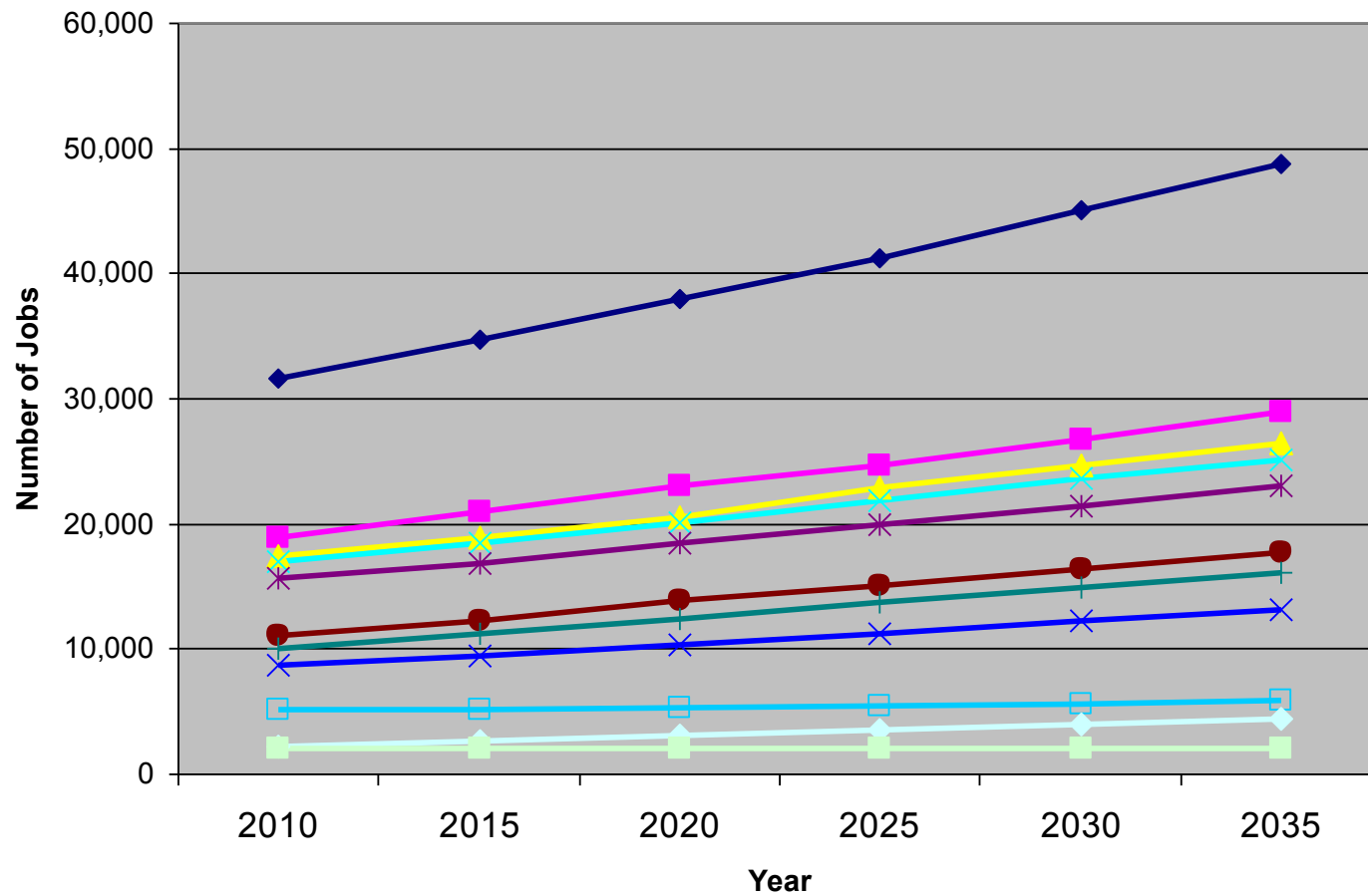


Responding to the Market ...

Filling the Skills Gap

- Engineers
- Nurses
- Skilled Trades
- Teachers
- Sales Representatives
- Technicians
- Drivers
- IT Staff
- Laborers
- Machinists/Machine Operators

Solano County Occupational Growth



Health and
Education
Services

Source: ABAG Projections 2009

Economic Opportunities

- Role in local economic development
- Basic skills supporting development of specialized skills
- Community colleges are the key to workforce development
- Need to directly connect programs to business and industry needs



Community Forums

Engaging the Community

- 8 Interactive discussions
- Exploring needs for:
 - Programs
 - Support Services
 - Resources
 - Facilities



SOLANO COMMUNITY COLLEGE

PROGRAMS

- ▶ COUNSELING STAFF MEETS WITH HIGH SCHOOL STUDENTS
- ▶ QUALITY INSTRUCTORS/PROFESSORS
- ▶ SPECIAL ADMISSIONS BENEFITS
- ▶ CLASSES OFFERED ON DIXON HS CAMPUS
- ▶ HOST FIRE ACADEMY
- ▶ BIOTECH, CONSUMER ED, TECH PREP FOR H.S. STUDENTS
- ▶ CUTTING ENGINEERING COURSES/DEPT IN SCC
- ▶ REGISTRATION PROCESS IS SMOOTH
- ▶ MIDDLE COLLEGE CONCEPT
- ▶ ENVIRONMENTAL, SUSTAINABILITY, PUBLIC SAFETY, CRIMINAL JUSTICE, NURSING, EDUCATION, PSYCHOLOGY
- ▶ GAPS IN ADULT EDUCATION

FACILITIES

- ▶ STRENGTHEN FIRE ACADEMY FACILITIES
- ▶ PARTNER W/ SOLANO COUNTY HIGH SCHOOLS
- ▶ UTILIZE VACANT FACILITIES AT HIGH SCHOOLS
- ▶ COUNTY COURT FACILITIES PARTNERSHIP
- ▶ INCLUDE COURTHOUSES IN FACILITIES PLAN

RESOURCES

- ▶ FINANCIAL CUTS TO FIRE ACADEMY
- ▶ FEDERAL FUNDS DIMINISHED
- ▶ NEW OPPORTUNITIES IN CONSUMER ECONOMICS
- ▶ PARTNER W/ UC DAVIS & SCC
- ▶ UTILIZE VACANT RESOURCES/FACILITIES
- ▶ ECONOMIC IMPACT AID FUNDS
- ▶ TRANSPORTATION TO SCC
- ▶ SPORTS ARE A BIG DRAW
- ▶ TRAIN WALKERS IN HYBRIDS
- ▶ AUTO TECH PROGRAMS
- ▶ ROP RESOURCES

SUPPORT

- ▶ ENGAGE H.S. PARENTS IN SCC DISCUSSION
- ▶ COLLEGE READINESS REQUIREMENTS
- ▶ DIXON REGIONAL INTERVENTION PROGRAMS
- ▶ COLLABORATE W/ COUNTY COURTS

2001 N. Village Parkway
Vacaville

Key Challenges

- Add capacity for programs
- Address poor college readiness
- Breakdown barriers between educational institutions
- Increase lab space and staffing
- Expand availability of study areas
- Develop soft skills for education and the workplace
- Improve transportation and local access
- Improve perceptions of SCCD
- Diverse funding for SCCD



Key Opportunities

- Add more four-year degrees
- Expand the peer tutoring
- Increase outreach to high schools
 - Middle College Concept!
- Evaluate shared space opportunities
- Develop Contract Education targeted to local businesses
- Leverage strong programs like nursing and fire academy to other growth areas
- Develop more Career and Technical Education Programs



Location Specific Ideas

- Align Travis AFB programs with CCAF
- Building Veteran's programs
- Increase comfort and safety for longer hours at Fairfield campus
- Stay connected to local communities such as Benicia, Winters and Dixon where no facilities exist
- Use Vacaville Center to build connections to UC Davis and Fresno State
- Connect Vallejo to UC Berkeley and the Lawrence Berkeley National Lab

Community Priorities

- Access
- Student Support Services
- Transfer Goal
- Partnerships
- Distance and Online Learning Opportunities
- Connect to Jobs
- Technology



What does this mean?

Take Away Points

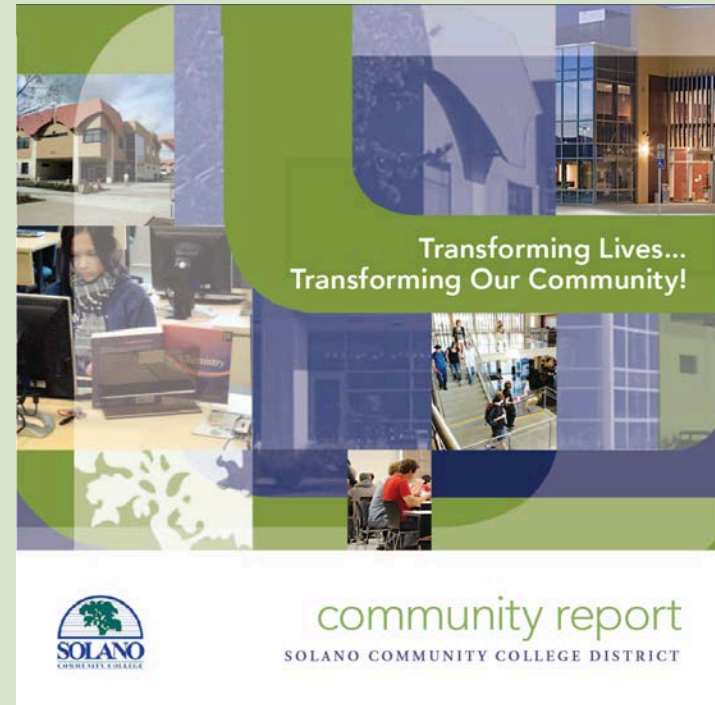
- Underprepared Students
- Enrollment Cap and Funding Shortfall
- Increased Diversity
- Older Students and Participation Rates
- Fulfilling Transfer Goal
- Classroom Success and Retention
- Learning Methods
- Connection to trends and Businesses

Emerging Opportunities

- Basic Skills across the curriculum and faculty
- Expand learning modalities: Online, short-track, hybrid
- Strong support and mentoring
- Outreach to address 1.5, 2nd and 3rd generation Latino community
- Integrating soft skills
- Target programs to meet business needs
- Increase contract education
- More and deeper partnerships: Cities, colleges, schools and businesses

Student Decision Factors

- Convenience
 - Locations
 - Online courses
- Making the programs unique and relevant to Solano County residents and businesses
- Enhancing Solano's Reputation and identity





Discussion



Next Steps

Next Steps

- Program Assessment Updates by Faculty and Staff
- Evaluation and Alignment of Programs
- Develop Preliminary Recommendations and Strategies
- Draft Plan



Solano Community College District Education Master Plan Update

Program Assessment Update

Program: Criminal Justice
School: Career Technical Education and Business

5-Year History

	2005-06	2006-07	2007-08	2008-09	2009-10
Total Enrollment	2531	2543	2657	2756	2941
Success Rate	71%	73%	69%	66%	64%
Retention Rate	85%	86%	83%	90%	89%

2007 Education Master Plan

Program Name: Criminal Justice
Division: Career Technical Education

Growth Trend: Strong

Strategies:

- Expand course topics (gangs, terrorism, prison and jail operations, and technology)
- Increase use of technology in courses
- Expand career opportunities for students
- Increase online course offerings
- *Additional Strategies?*
-
-

Rationale:

High growth projections for Protective Services occupations, projected population growth, low number of competitive educational providers, growth in enrollment and FTES, and the location of two state prisons in the county all suggest the potential for program expansion. Upgrading to include current industry technology in the program will ensure that students are successfully trained for entry-level positions with city, county and private employers.

Comments/Updates to Rationale:



Educational Master Plan Update

Fall 2011

SOLANO
COMMUNITY COLLEGE DISTRICT

Table 4-3: Local Community College Comparison Context (County Statistics)

Community College	American River	Contra Costa	Cosumnes River	Diablo Valley	Napa Valley	Sacramento City	Solano
County	Sacramento	Contra Costa	Sacramento	Contra Costa	Napa	Sacramento	Solano
County population	1,417,259	1,047,948	1,417,259	1,047,948	136,316	1,417,259	413,268
Violent Crime (per 100,000)	624.2	398.3	624.2	398.3	418.9	624.2	484
Property Crime (per 100,000)	2210.8	1856.6	2210.8	1856.6	1180.2	2210.8	1983.9
Larceny-Theft (per 100,000)	2150.8	1610.5	2150.8	1610.5	1510.3	2150.8	1645.8
Educational Attainment Population 18 to 24 years							
Less than high school graduate	17.2%	16.9%	17.2%	16.9%	17.4%	17.2%	16.5%
High school graduate (includes equivalency)	32.8%	30.2%	32.8%	30.2%	31.7%	32.8%	33.2%
Some college or Associates degree	43.5%	43.6%	43.5%	43.6%	40.9%	43.5%	44.1%
Bachelors degree or higher	6.6%	9.4%	6.6%	9.4%	9.9%	6.6%	6.2%
Educational Attainment Population 25 years and over							
Less than 9th grade	6.9%	5.7%	6.9%	5.7%	9.8%	6.9%	6.5%
9th to 12th grade, no diploma	8.0%	6.2%	8.0%	6.2%	7.5%	8.0%	8.0%
High school graduate (includes equivalency)	22.8%	20.2%	22.8%	20.2%	21.4%	22.8%	24.5%
Some college, no degree	25.3%	22.1%	25.3%	22.1%	22.6%	25.3%	26.5%
Associates degree	9.0%	8.1%	9.0%	8.1%	8.4%	9.0%	10.6%
Bachelors degree	19.0%	24.2%	19.0%	24.2%	19.8%	19.0%	16.9%
Graduate or professional degree	8.8%	13.4%	8.8%	13.4%	10.5%	8.8%	7.0%

Source: 2010 Census, 2009 FBI Crime Summaries, 2005-2009 American Community Survey 5 year Estimates